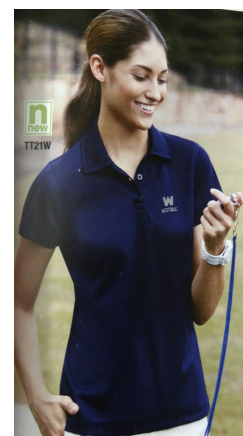


Westport Wear -- Westport Athletic Boosters Order Form



Polo Shirt:

- 100% polyester snag protection pique´
- Moisture-wicking, anti-microbial and UV protection
- Side slits
- **Brown with white lettering**
- **Large "W" on top w/ Westport underneath on left chest**
- Male and female cuts
- Sizes: XS, S, M, L, XL, 2XL, 3XL, (4XL mens only)
- \$25



Performance Tee

- 100% polyester
- **Brown with white logo**
- Youth/Adult sizes
- \$18 long sleeve
- \$15 short sleeve
- Longitude/latitude on back



Cotton Tee

- **Brown with white logo**
- **White or Gray with brown logo**
- Youth/Adult sizes **No BROWN in youth sizes**
- \$18 long sleeve
- \$15 short sleeve
- **WESTPORT** down sleeve on long and on the back for short



Campus Microfleece Jacket

- 100% polyester anti-pill
- Center front reverse coil zipper with semi-autolock rubber pull tab
- Inseam front side pockets
- **Brown with white lettering**
- **Westport on top with Wildcat face underneath on left chest**
- Men and women's sizing
- XS, S, M, LG, XL, 2XL, 3XL (4XL mens only)
- \$35

In Stock
Scarves - \$15, Baseball hats-\$10, Stickers-\$1, Lanyards - \$1

Westport Wear -- Westport Athletic Boosters Order Form

Office Use Only #

Name _____ School _____

Email _____ Phone _____

Payment - Check # _____ (payable to WAB-Westport Athletic Boosters)

Cash _____

Order Date _____

Item(s)	M/F cut	SIZE	COLOR	QTY.	PRICE	TOTAL
Polo Shirt			BROWN		25.00	
Performance Tee long sleeve	X		BROWN		18.00	
Performance Tee short sleeve	X		BROWN		15.00	
Microfleece Jacket			BROWN		35.00	
Cotton Tee - Long sleeve BROWN, WHITE, GRAY NO BROWN IN YOUTH	X				18.00	
Cotton Tee - short sleeve BROWN, WHITE, GRAY NO BROWN IN YOUTH	X				15.00	
Check payable to WAB(Westport Athletic Boosters) Total						

Directions:

1. Print and complete order forms
2. Write check out to WAB (Westport Athletic Boosters) or cash - advance payment necessary for ordering
3. Turn your order/payment into MAC - Judy Oliveira, WES - Susan Viveiros, WJSHS -Jay Pacheco
4. Orders will be placed on the first Friday of every month and be ready in approximately 3 weeks

